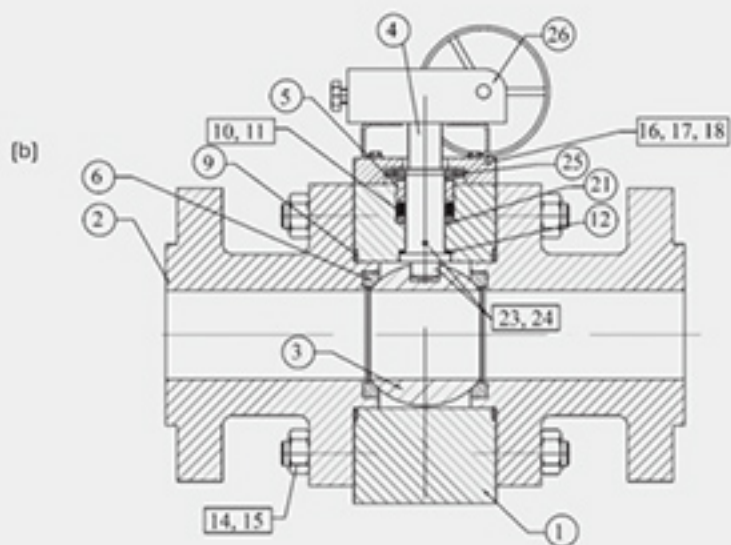
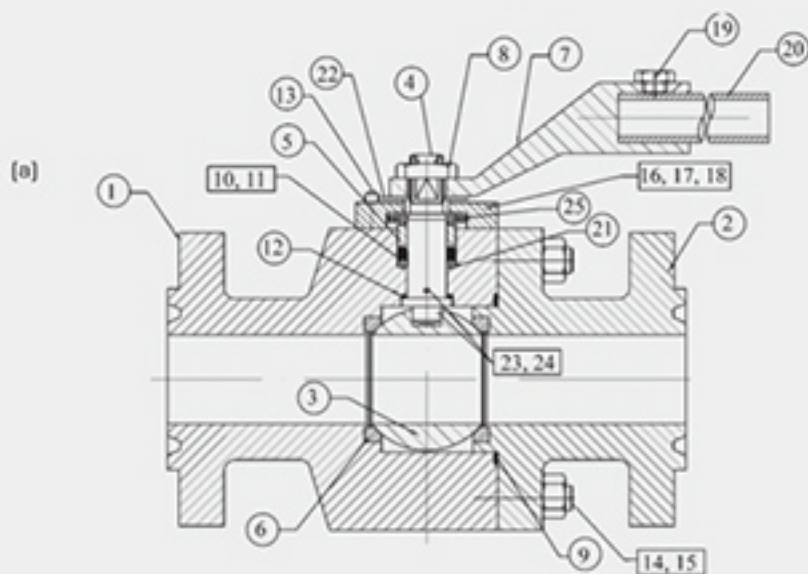


**BILL OF MATERIALS AND PARTS
CLASS 600-900**
**AV 610F - 910F
Floating ball design Forged material**


a)- 2 Pieces design 1" : 4"

b)- 3 Pieces design 6" : 16"

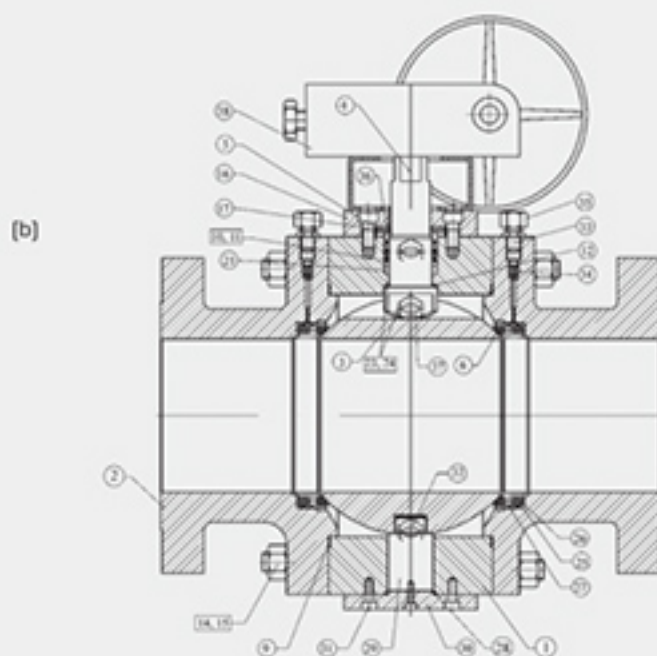
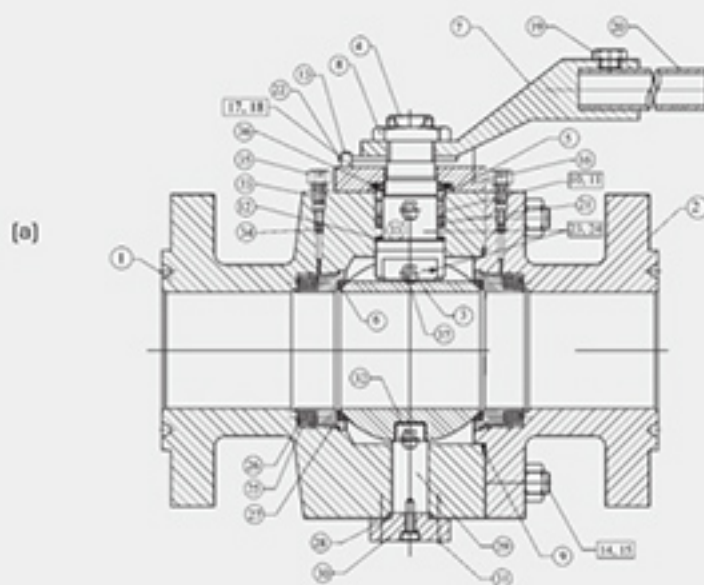
BILL OF MATERIALS AND PARTS CLASS 600-900

MV 610F - 910F

Floating ball design

Forged material

No.	Component	Material
1	Body	ASTM A105 N
2	End	ASTM A105 N
3	Ball	ASTM A351Gr.CF8M or A105+N
4	Stem	ASTM A182 F316
5	Gland	Carbon Steel (zinc plated)
6	Seat	PTFE or RTFE
7	Handle	Carbon Steel
8	Handle nut	ASTM A193Gr.B8
9	Body Seal	PTFE or Graphite
10	Packing	PTFE or Graphite
11	Packing male	PTFE or Graphite
12	Thrust washer	RTFE
13	Stop pin	Heat Treated Alloy Steel
14	Body end stud	ASTM A193Gr.B7
15	Body end nuts	ASTM A194Gr.2H
16	Gland flange	Carbon Steel (zinc plated)
17	Gland stud	ASTM A193Gr.B7
18	Gland nut	ASTM A194Gr.2H
19	Handle extension set screw	Carbon Steel (zinc plated)
20	Handle extension	Carbon Steel (zinc plated)
21	Bearing	Copper graphite
22	Stop plate	Carbon Steel
23	Anti-static ball	Stainless Steel 303
24	Anti-static spring	Stainless Steel 302
25	Cup Spring	Spring Alloy Steel
26	Gear Box	Vertical or horizontal

**BILL OF MATERIALS AND PARTS
CLASS 600-900**
MV 610F - 910F
Trunnion ball design Forged material


a)- Valve with handle

b)- Valve with gear box

BILL OF MATERIALS AND PARTS CLASS 600-900

MV 610F - 910F Trunnion ball design Forged material

No.	Component	Material
1	Body	ASTM A105 N
2	End	ASTM A105 N
3	Ball	ASTM A351Gr.CFBM or A105+Ni
4	Stem	ASTM A182 F316
5	Gland	Carbon Steel (zinc plated)
6	Seat	PTFE or RTFE
7	Handle	Carbon Steel
8	Handle nut	ASTM A193Gr.B8
9	Body Seal	PTFE or Graphite
10	Packing	PTFE or Graphite
11	Packing male	PTFE or Graphite
12	Thrust washer	RTFE
13	Stop pin	Heat Treated Alloy Steel
14	Body end stud	ASTM A193Gr.B7
15	Body end nuts	ASTM A194Gr.2H
16	Gland flange	Carbon Steel (zinc plated)
17	Gland stud	ASTM A193Gr.B7
18	Gland nut	ASTM A194Gr.2H
19	Handle extension set screw	Carbon Steel (zinc plated)
20	Handle extension	Carbon Steel
21	Bearing	Copper graphite
22	Stop plate	Carbon Steel (zinc plated)
23	Anti-static ball	Stainless Steel 303
24	Anti-static spring	Stainless Steel 302
25	Insert	Stainless Steel 304
26	Spring	Inconel 750
27	O-ring	Viton
28	O-ring	Viton
29	Trunnion mounted	Stainless Steel 304
30	Trunnion base	Carbon Steel (Zinc plated)
31	Trunnion base bolt	Carbon Steel
32	Block and bleed	Carbon Steel
33	Grease nipple	Carbon Steel
34	Non return Valve	Carbon Steel
35	Isolating valve	Carbon Steel
36	Cup spring	Alloy steel
37	Vent	Carbon Steel
38	Gear box or actuator	Vertical or horizontal